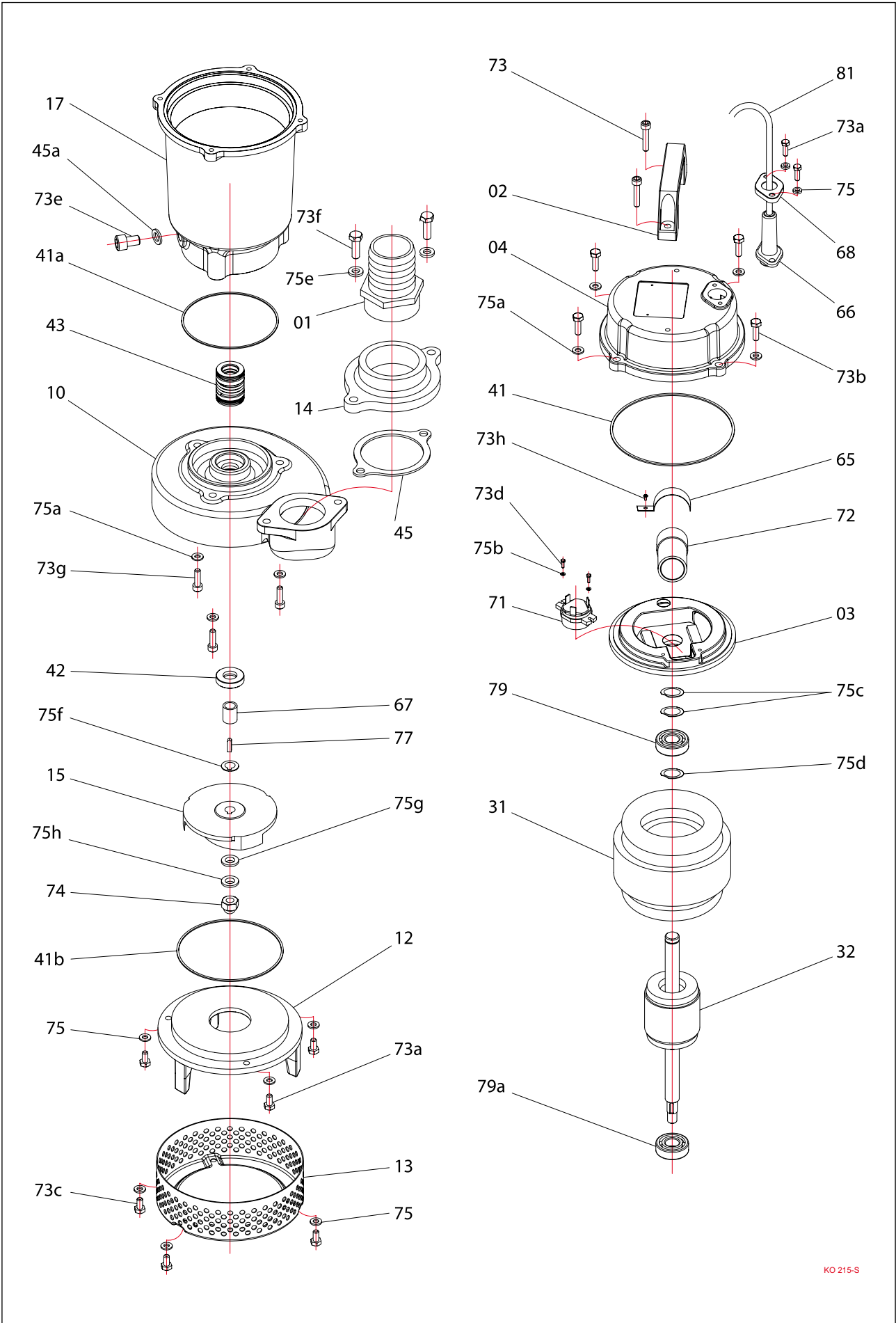


Type	A	B	C
KO 215 S	440	305	93



Index	Code NO	Description	Q'ty	Size	Material
01	01010611	Discharge head	1	2"	Thermal plastic
02	02012	Handle	1		Thermal plastic
03	0336KO-0150	Switch plate	1		FC-20
04	0436KO-0150	Upper cover	1		FC-20
10	1036KO-0150	Pump casing	1		FC-20
12	1236KO-0150	Inlet plate	1		FC-20
13	13430705007	Strainer	1	7*50*176	SUS-304
14	1436061B	Flange	1	3" 2"	FC-20
15	1536LB-0150130	Impeller	1	130*20* 4*12	FC-20
17	1736125205B	Moter frame	1	125*205H	FC-20
31	311240209F3-B	Stator	1	125*60*90L 230V	
32	321KO-0150	Shaft/Rotor (without Bearing)	1	125*60*90L	
41	411035-01	O'ring	1	3.5MM*133	N-70
41a	411031-15	O'ring	1	3.1MM*90	N-70
41b	411026-01	O'ring	1	2.62MM*120.3	N-70
42	4214315-01	Oil seal	1	15MM-30*5	SUS-304
43	432216-1	Mech. seal	1	Double 16-1 SIC/SIC VS CE/CA	
45	455LB-015010	Gasket	1	3"	N-70
45a	459010	Gasket	1		N-70
65	65312	Shim	1	57MM	
66	66715085	Cable gland	1		
67	674315-02	Shaft sleeve	1	15*12*1.05	SUS-304
68	68431	Gland holder	1		SUS-304
71	7127-02	Thermal protector	1	KA112 BFXL21H	
72	721400030	Capacitor	1	400V*30UF	
73	73433060201	Screw	2	Round cross M6*20	SUS-304
73a	73431050161	Screw	5	Flat hex. M5*16	SUS-304
73b	73431060201	Screw	4	Flat hex. M6*20	SUS-304
73c	73431050121	Screw	3	Flat hex. M5*12	SUS-304
73d	73303040121	Screw	2	Round cross M4*12	SC
73e	73432100161	Screw	1	Socket hex. M10*16	SUS-304
73f	73431080251	Screw	2	Flat hex. M8*25	SUS-304
73g	73432060161	Screw	3	Socket hex. M6*16	SUS-304
73h	73303040081	Screw	1	Round cross M4*8	SC
74	7424310	Nut	1	M10	SUS-304
75	753430005-01	Spring washer	8	M5	SUS-304
75a	753430006-01	Spring washer	7	M6	SUS-304
75b	752300004-01	Washer	2	M4	SC
75c	751306203	Wave washer	2	6203	SC
75d	752306203-01	Washer	1	6203	SC
75e	752430008-01	Washer	2	M8*19*1.1T	SUS-304
75f	755430012-01	Washer	1	M12	SUS-304
75g	752430010-03	Washer	1	M10	SUS-304
75h	753430010-01	Spring washer	1	M10	SUS-304
77	772431-01	Key	1	4*4*10	SUS-304
79	79362031	Bearing	1	6203	
79a	79362041	Bearing	1	6204	
81	81081532004112-1	Cable	1	H07RN-F 1.5*3C*20M	
Remarks					
		O'ring & Gasket sets	1		