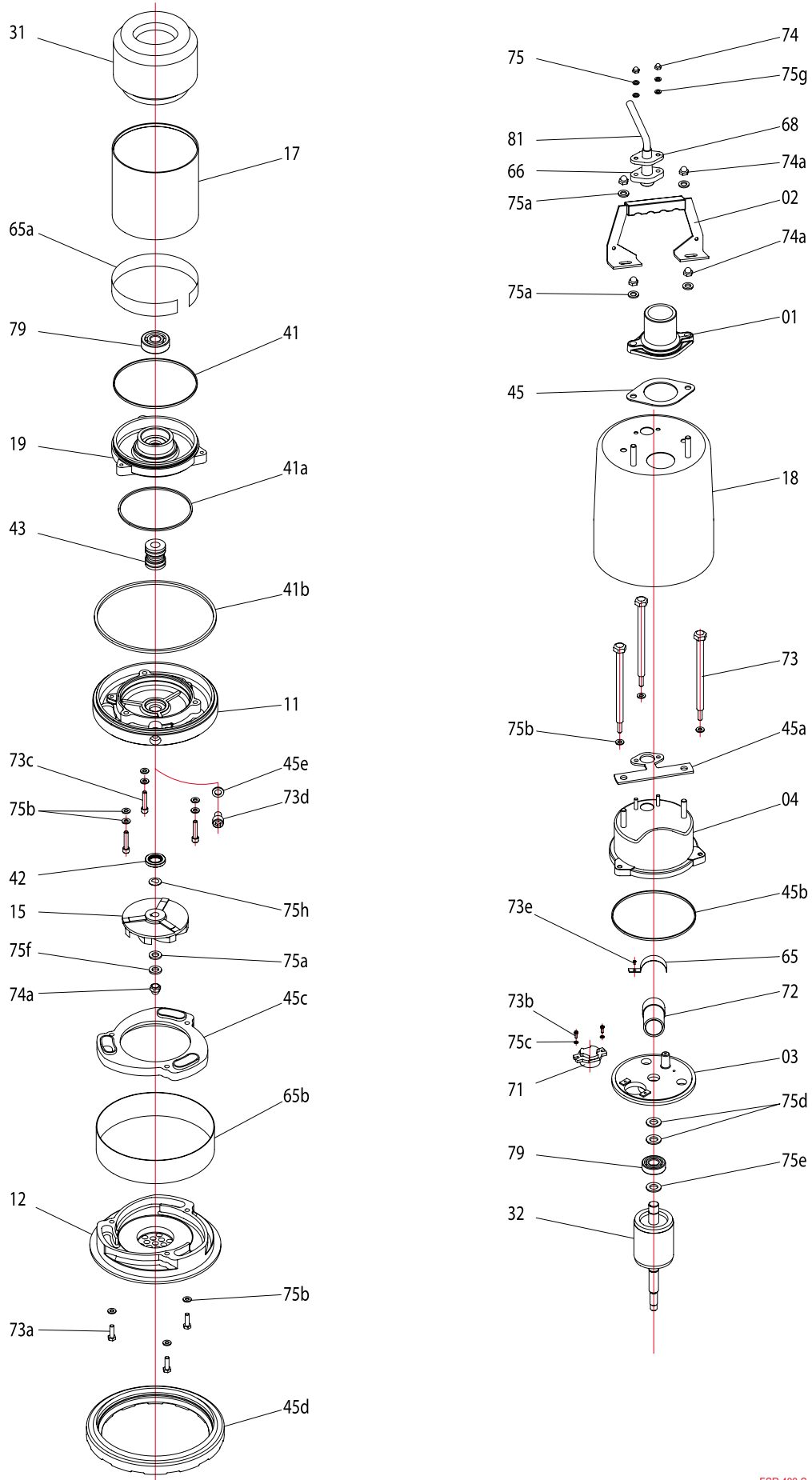


Type	A	B	C	D
FSR 400 S	335	248	72	208



Index	Code NO	Description	Q'ty	Size	Material
01	01360332	Discharge head	1	1"	FC-20
02	02304	Handle	1		SC
03	0336FS-0075	Switch plate	1		FC-20
04	0443FS-0075	Motor cover	1		SUS-304
11	1136FS-0075	Seal braket	1		FC-20
12	1236FSR0040	Inlet plate	1		FC-20
15	1503FSR0040098	Impeller	1	98*20*8*11	Thermal Plastic
17	1743125095	Motor frame	1	125*95H	SUS-304
18	1843FS-0040	Outer case	1		SUS-304
19	1936FS0040	Bearing bracket	1		FC-20
31	311240204E3-B	Stator	1	125*60*40L 230V	
32	321FSR0040	Shaft/Rotor without Bearing	1	125*60*40L	
41	411026-01	O'ring	1	2.62MM*120.3	N-70
41a	411031-01	O'ring	1	3.1MM*104.4	N-70
41b	411026-03	O'ring	1	2.62MM*165	N-70
42	4214315-01	Oil seal	1	15MM-30*5	SUS-304
43	432214-4	Mech.seal	1	Double 14-4 SIC/SIC VS CM/CB	
45	455FS-007510	Gasket	1		N-70
45a	451FS-007510	Gasket	1		N-70
45b	452FS-015010	Gasket	1		N-70
45c	454FS-004011	Volute liner	1		N-90
45d	458FSR004010	Feet support	1		N-70
45e	459010	Gasket	1		N-70
65	65312	Shim	1	57MM	
65a	6531114	Shim	1	14MM	SC
65b	6543138	Shim	1	38MM	SUS-304
66	66715085	Cable gland	1		
68	68431	Gland Holder	1		SUS-304
71	7127-03	Thermal protector	1	KA112 BBXL04	
72	721350015	Capacitor	1	350V*15UF	
73	73436061131	Screw	3	Flat hex. M6*113	SUS-304
73a	73431060401	Screw	3	Flat hex.M6*40	SUS-304
73b	73303040121	Screw	2	Round crossM4*12	SC
73c	73432060301	Screw	3	Socket hex. M6*30	SUS-304
73d	73432100161	Screw	1	Socket hex. M10*16	SUS-304
73e	73303040081	Screw	1	Round crossM4*8	SC
74	7424305	Nut	2	M5	SUS-304
74a	7424308	Nut	5	M8	SUS-304
75	753430005-01	Spring washer	2	M5	SUS-304
75a	752430008-01	Washer	5	M8	SUS-304
75b	753430006-01	Spring washer	9	M6	SUS-304
75c	752300004-01	Washer	2	M4	SC
75d	751306202	Wave washer	2	6202	SC
75e	752306202-01	Washer	1	6202	SC
75f	753430008-01	Spring washer	1	M8	SUS-304
75g	752430005	Washer	2	M5	SC
75h	754430010	Washer	2		SUS-304
79	79362021	Bearing	2	6202	
81	81081031004142	Cable	1	H07RN-F 1.0*3C*10M	
Remarks					
		O'ring & Gasket sets	1		