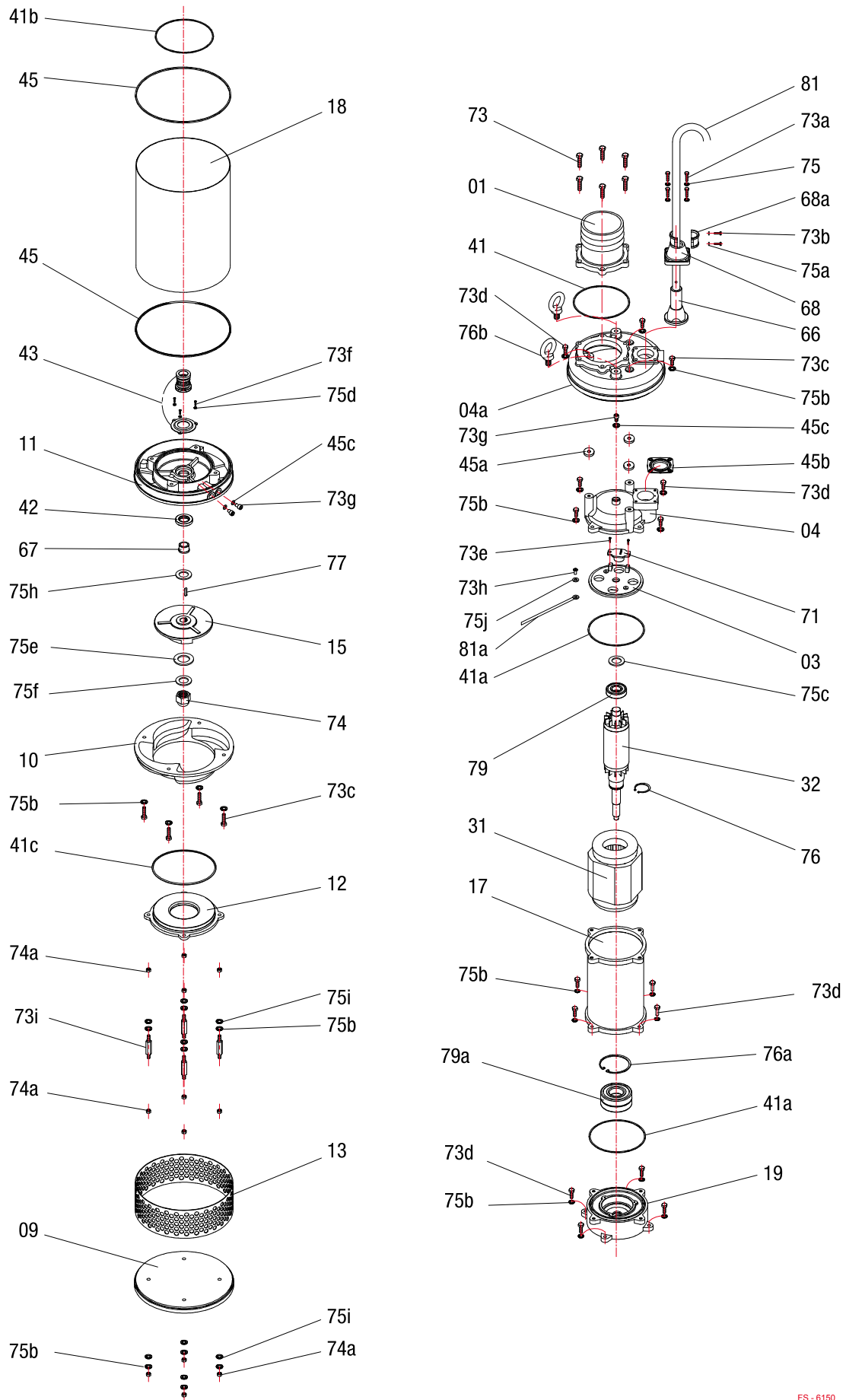


Type	A	B	C	D
FS 6150 T	864	759	350	146



Index	Code NO	Description	Q'ty	Size	Material
01	01360952	Discharge head	1	6"	FC-20
03	0336FS-1125	Switch plate	1		FC-20
04	0436FS-1125	Motor cover	1		FC-20
04a	0436FS-1125F	Upper cover	1		FC-20
09	0935FS-1125	Base plate	1		FCD-45
10	1036FS-1500	Pump casing	1		FC-20
11	1136FS-1125	Seal bracket	1		FC-20
12	1236FS1500	Inlet plate	1		FC-20
13	13431512511	Strainer	1	15MM*125*1077	SUS-304
15	1541FS1500220	Impeller	1	220*4*25	High Chrome Steel
17	1736190350	Motor frame	1	190*350H	FC-20
18	1843FS1500	Outer case	1		SUS-304
19	1936FS1125	Bearing bracket	1		FC-20
31	313440618F6	Stator	1	190*108*180L	
32	323FS1500	Shaft/Rotor without Bearing	1		
41	411057-01	O'ring	1	5.7MM*145	N-70
41a	411031-02	O'ring	2	3.1MM*190	N-70
41b	411031-14	O'ring	1	3.1MM*195	N-70
41c	411031-04	O'ring	1	3.1MM*220	N-70
42	4214335-01	Oil seal	1	35MM*60*12	
43	432230-01	Mech.seal	1	Double 30 SIC/SIC VS CM/CB	
45	456FS-112510	Gasket	2		N-70
45a	451FS-112510-2	Gasket	3		N-70
45b	451FS-112510-1	Gasket	1		N-70
45c	459010	Gasket	3		N-70
66	66715170	Cable gland	1	17MM	NBR
67	674335-01	Shaft sleeve	1	35MM*25*21	SUS-304
68	68363	Gland Holder	1		FC-20
68a	68363A	Gland Holder	1		FC-20
71	7128-08	Thermal protector	1	KA315 JNBN00	
73	73431120351	Screw	6	Flat hex. M12*35	SUS-304
73a	73431080551	Screw	4	Flat hex.M8*55	SUS-304
73b	73431060201	Screw	2	Flat hex.M6*20	SUS-304
73c	73431100401	Screw	6	Flat hex.M10*40	SUS-304
73d	73431100351	Screw	13	Flat hex.M10*35	SUS-304
73e	73433040121	Screw	2	Round crossM4*12	SUS-304
73f	73431050121	Screw	3	Flat hex.M5*12	SUS-304
73g	73432100161	Screw	3	Socket hex.M10*16	SUS-304
73h	73303040081	Screw	4	Round crossM4*8	SC
73i	73437101021	Screw	1	M10*102	SUS-304
74	7434316	Nut	1	M16	SUS-304
74a	7424310	Nut	12	M10	SUS-304
75	753430008-01	Spring washer	4	M8	SUS-304
75a	753430006-01	Spring washer	2	M6	SUS-304
75b	753430010-01	Spring washer	27	M10	SUS-304
75c	751306306	Wave washer	1	6306	SC
75d	753430005-01	Spring washer	3	M5	SUS-304
75e	752430016-03	Washer	1	M16.8*33*1.9T	SUS-304
75f	753430016-01	Spring washer	1	M16	SUS-304
75g	753430010-01	Spring washer	4	M10	SUS-304
75h	752430025-01	Washer	1	M25*35*0.5T	SUS-304
75i	752430010-01	Washer	8	M10*22*1T	SUS-304
75j	757300004	Spring washer	1	M4	SC
76	7602-03	C'ing	1	STW-40	
76a	7601-03	C'ing	1	RTW-90	
76b	7607-01	Ring fastener	2	M12	
77	771433-01	Key	1	7*7*18	SUS-304
79	79363061	Bearing	1	6306	
79a	79363081	Bearing	2	6308	
81	8108604200112	Cable	1	H07RN-F 6.0*4C*20M	
81a	811202	Earth lead	1		
Remarks					
		O'ring & Gasket sets	1		