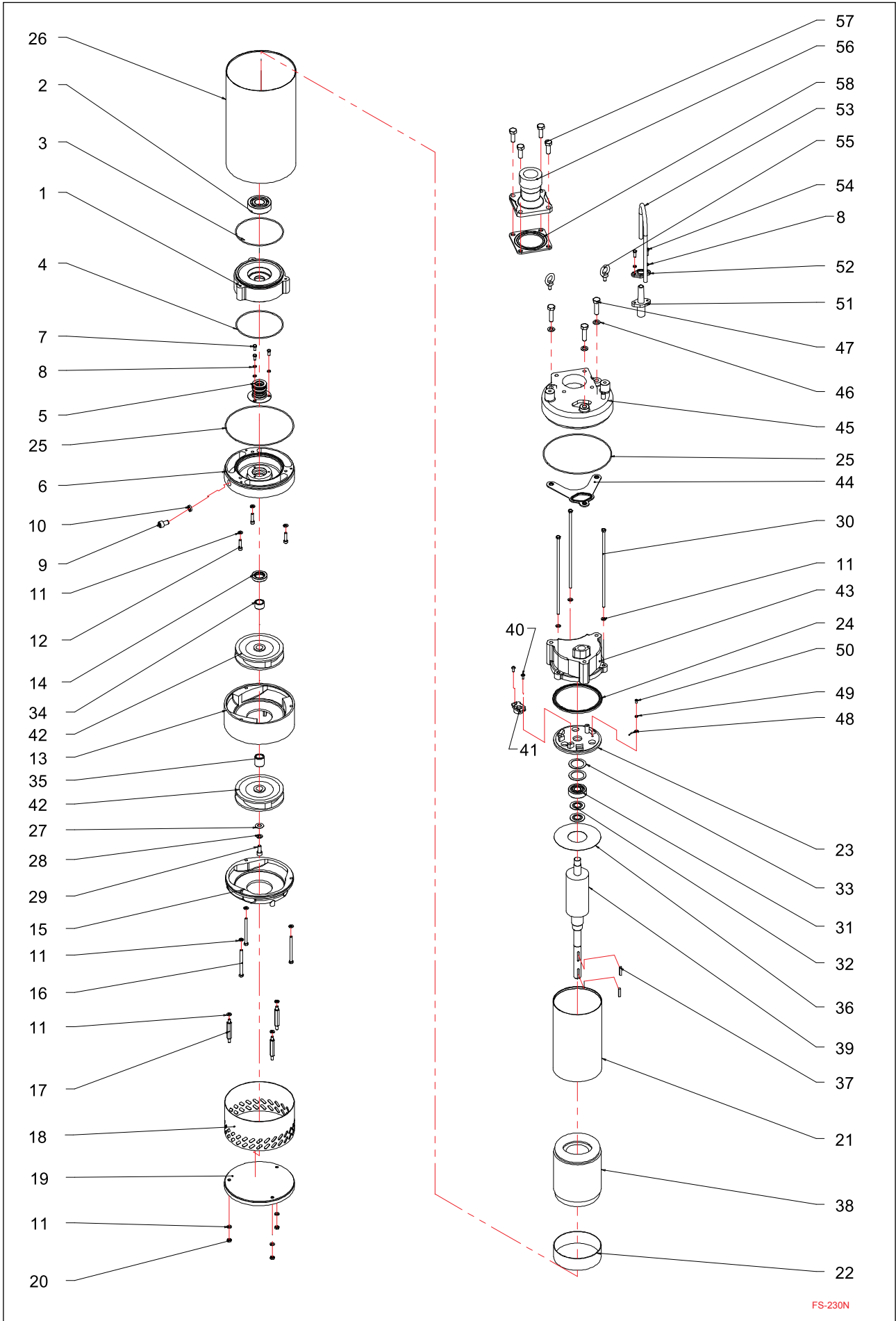


Type	A	B	C
FS 230 N	658	196	188



Index	Code NO	Description	Q'ty	Size	Material
1	1936FS0225	Bearing bracket	1		FC-20
2	79363051	Bearing	1	6305	
3	411026-01(01)	O'ring	1	2.62mm*120.3	N-70
4	411026-01	O'ring	1	2.62mm*120.3	N-70
5	432220-01	Mech.seal	1	ED*560*M20 EW00830	"SIC/SIC/NBR VS CM/CB/"
6	1136JC0300	Seal bracket	1		FC-20
7	73431050121	Screw	3	Flat hex.M5*12	SUS-304
8	753430005-01	Spring washer	5	Spring washer M5	SUS-304
9	73432100161	Screw	1	Socket hex.M10*16	SUS-304
10	459010	Gasket	1		N-70
11	753430006-01	Spring washer	15	Spring washer M6	SUS-304
12	73432060251	Screw	3	Socket hex. M6*25	SUS-304
13	1036JC0300	Pump casing	1		FC-20
14	4214325-01	Oil seal	1	25MM*40*8	SUS-304
15	1236JC0300	Inlet plate	1		FC-20
16	73431060801	Screw	3	Flat hex. M6*80	SUS-304
17	73437060731	Screw	3	Twin head M6*73.5	SUS-304
18	1343JC0300	Strainer	1		SUS-304
19	0935JC0300	Base plate	1		FCD-45
20	7414306	Nut	3	Nut M6	SUS-304
21	1743125215	Motor frame	1		SUS-304
22	6531136	Shim	1		
23	0336FS0225	Switch plate	1		FC-20
24	452FS015010	Gasket	1		N-70
25	411026-031	O'ring	2	O'ring 2.62MM*171.12	N-70
26	1843JC0300	Outer case	1		SUS-304
27	752430010-01	Washer	1	Washer M10*22*1T	SUS-304
28	753430008-01	Spring washer	1	Spring washer M8	SUS-304
29	73432080201	Screw	1	Socket hex. M8*20	SUS-304
30	73436062401	Screw	3	Flat hex. M6*245	SUS-304
31	79363031	Bearing	1	6303	
32	752306203-01	Washer	2	Washer M17*37*1T	SC
33	751306303	Wave washer	2	Wave washer BWW-6204	SC
34	674325-03	Shaft sleeve	1	25*18*15H	SUS-304
35	674323-01	Shaft sleeve	1	23MM*18*25H	SUS-304
36	64901123A	Insulating sheet	1		
37	771432-06	Key	2	4.8*5*25	SUS-304
38	313440212F6	Stator	1	3phase 440v 125*60*120L	
39	323JC0300	Shaft/Rotor without Bearing	1		
40	73433040121	Screw	2	Cross M4*12	SUS-304
41	7128-04	Thermal protector	1	MWH-26-KN	
42	1541JC0300126	Impeller	2	50HZ	HCR
43	0436FS0225	Motor cover	1		FC-20
44	451JC0300	Gasket	1		N-70
45	0436JC0300F	Upper cover	1		FC-20
46	753430010-01	Screw	3	Spring washer M10	SUS-304
47	73431100401	Screw	3	Flat hex. M10*40	SUS-304
48	811	Earth lead	1		
49	757300004	Washer	1	AW-04	SC
50	73303040081	Screw	1	Round cross M4*8	SC
51	66VA	Cable gland	1		NBR
52	68431	Gland Holder	1		SUS-304
53	810	Cable	1		
54	73431050151	Screw	2	Flat hex. M5*16	SUS-304
55	7607-02	Rings	2		SUS-304
56	01360642-1	"Discharge head"	1	2"	FC-20
57	73431100301	Screw	4	Flat hex. M10*30	SUS-304
58	455FS022510	Gasket	1		N-70