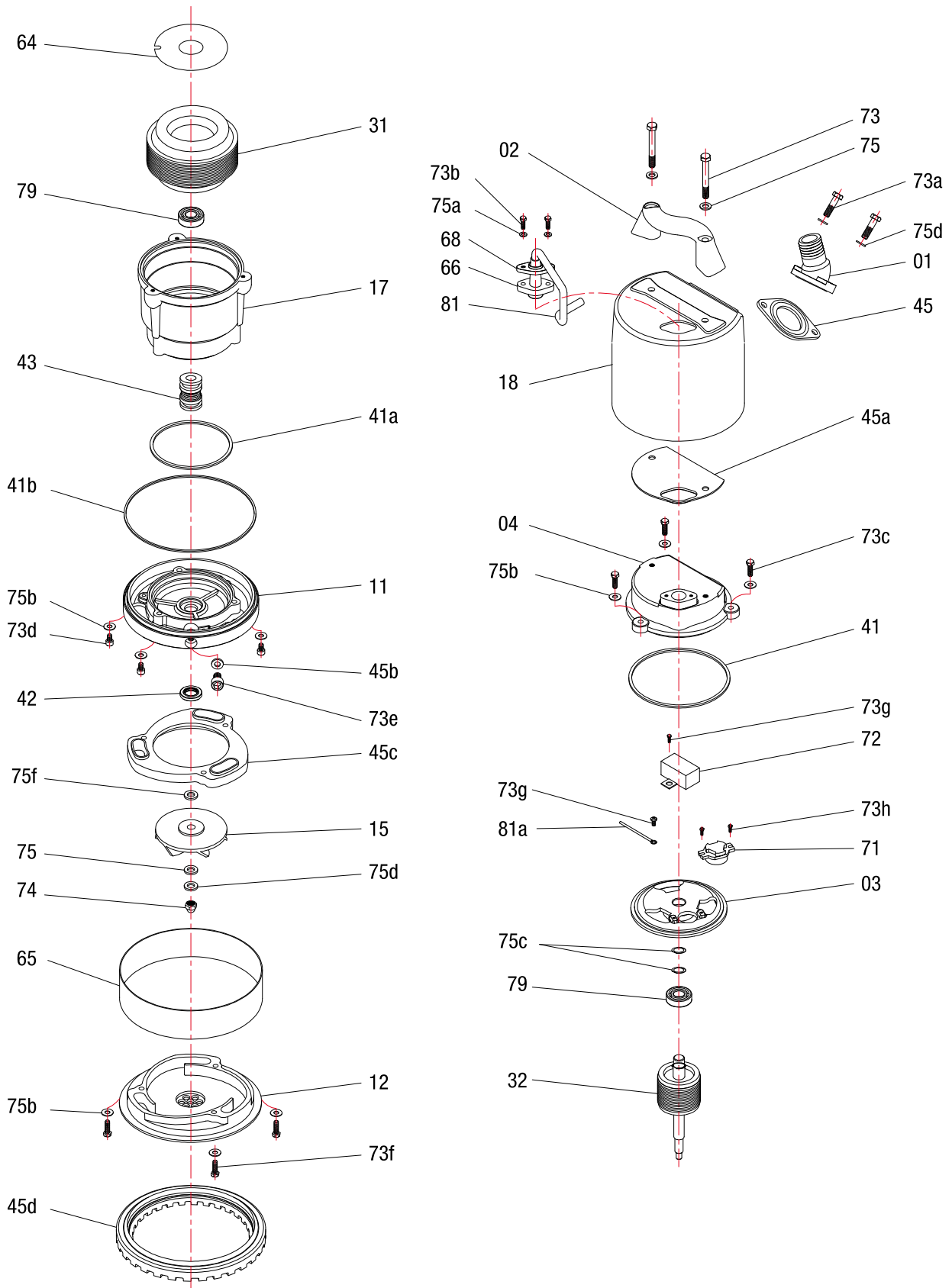


Type	A	B	C	D
FLSR 400 S	300	235	78	208



Index	Code NO	Description	Q'ty	Size	Material
01	01500332	Discharge head	1	1"	Allu.
02	020122	Handle	1		Plastic
03	0350FLS0040-1	Switch plate	1		Allu.
04	0450FLS0040	Motor cover	1		Allu.
11	1150FLS0040	Seal bracket	1		Allu.
12	1236FSR0040	Inlet plate	1		FC-20
15	1501FSR0040098	Impeller	1		Plastic
17	1750125110	Motor frame	1	125*110H	Allu.
18	1850FLS0040	Outer case	1		Allu.
31	311240204E3-B	Stator	1	125*60*40L	
32	321FSR0040	Shaft/Rotor without Bearing	1		
41	411031-12	O'ring	1	3.1MM*130	N-70
41a	411031-01	O'ring	1	3.1MM*104.4	N-70
41b	411031-10	O'ring	1	3.1MM*168	N-70
42	4214316-02	Oil seal	1	16*30*5	
43	432214-4	Mech.seal	1	Double 14-4 SIC/SIC/NBR VS CM/CB/	
45	455FLS004010	Gasket	1		N-70
45a	451FLS004010	Gasket	1		N-70
45b	459010	Gasket	1		N-70
45c	454FLS004010	Volute liner	1		NBR
45d	458FSR004010	Feet support	1		NBR
64	64901123B	Insulating sheet	1		
65	653038-1	Shim	1		
66	66715085	Cable gland	1	8.5MM	N-70
68	68431	Gland Holder	1		SUS-304
71	7127-03	Thermal protector	1	KA112 BBXL04	
72	723350015	Capacitor	1		
73	73301080701	Screw	2	Flat hex. M8*75	SC
73a	73431080251	Screw	2	Flat hex. M8*25	SUS-304
73b	73431050151	Screw	2	Flat hex.M5*16	SUS-304
73c	73431060201	Screw	3	Flat hex.M6*20	SUS-304
73d	73432060251	Screw	3	Socket hex. M6*25	SUS-304
73e	73432100161	Screw	1	Socket hex. M10*16	SUS-304
73f	73431060451	Screw	3	Flat hex. M6*45	SUS-304
73g	73303040081	Screw	2	Round crosM4*8	SC
73h	73433040121	Screw	2	Round cross M4*12	SUS-304
74	7434308	Nut	1	M8	SUS-304
75	752430008-01	Washer	3	M8*19*1.1T	SUS-304
75a	753430005-01	Spring washer	2	M5	SUS-304
75b	753430006-01	Spring washer	9	M6	SUS-304
75c	751306202	Wave washer	2	6202	SC
75d	753430008-01	Spring washer	3	M8	SUS-304
75e	757300004	Spring washer	1	M4	SC
75f	754430012-01	Washer	1	M12	SUS-304
79	79362021	Bearing	2	6202	
81	81081031004142	Cable	1	H07RN-F 1.0*3C*10M	
81a	811601	Earth lead	1		
Remarks					
		O'ring & Gasket sets	1		