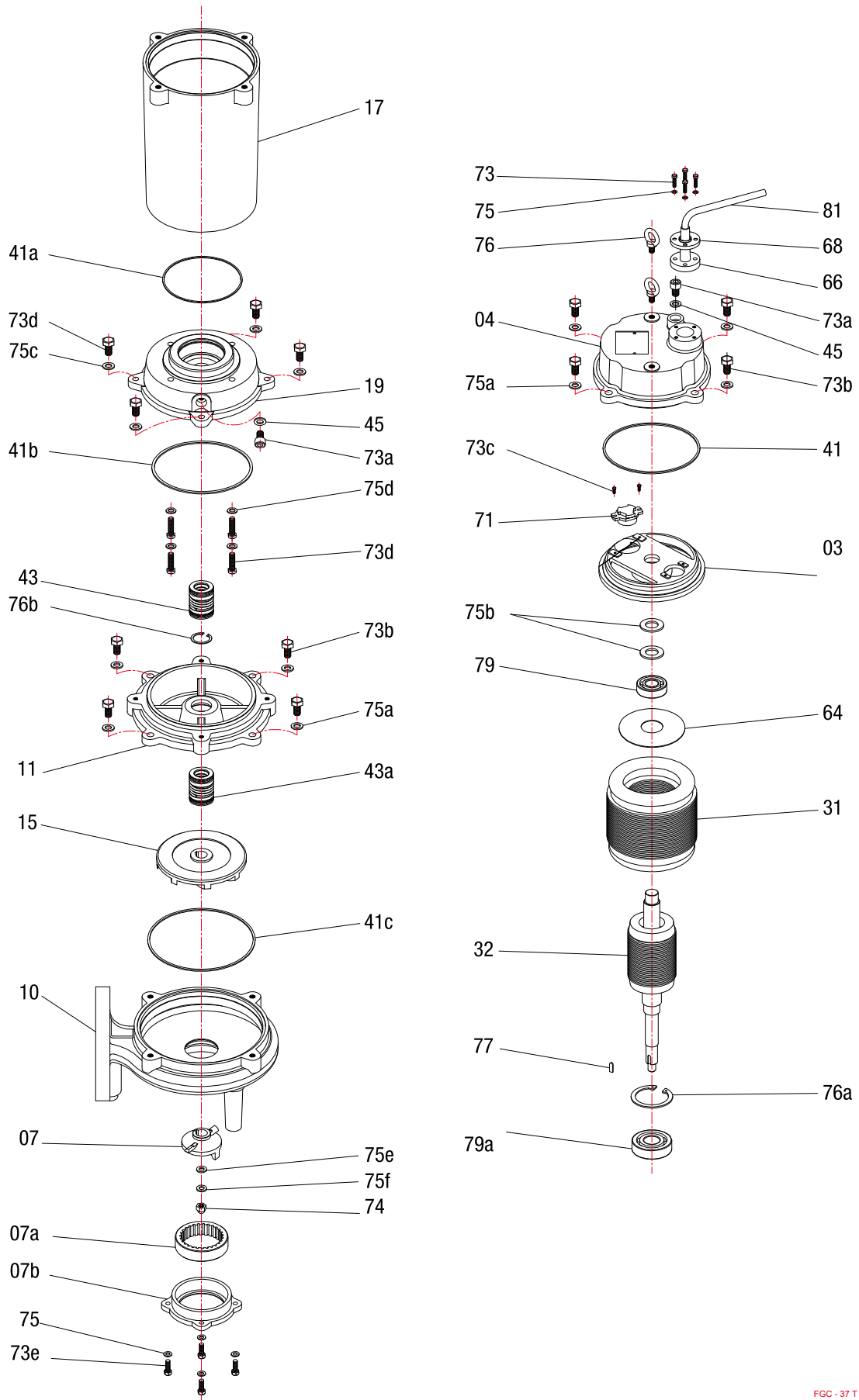


Type	A	B	C	D
FGC 37 T	571,5	45	100	285



Index	Code NO	Description	Q'ty	Size	Material
02	02355	Handle	1		FCD-45
03	0336FBV0375	Switch plate	1		FC-20
04	0436BV0550	Upper cover	1		FC-20
07	0741FGC0150-2-1	Cutter	1		High Chrome Steel
07a	0741FGC0375	Cutter Ring	1		High Chrome Steel
07b	0736FGC0150-1	Cutter Bracket	1		FC-20
10	1036FGC0550	Pump casing	1		FC-20
11	1136FGC0550	Seal bracket	1		FC-20
15	1536FGC0375174	Impeller	1	174*18	FC-20
17	1736160265	Motor frame	1	160*265H	FC-20
19	1936FGC0375	Bearing bracket	1		FC-20
31	313440510F6	Stator	1	160*82*100L	
32	323FGC0375	Shaft/Rotor without Bearing	1		
41	411031-08	O'ring	1	3.1MM*160	N-70
41a	411031-07	O'ring	1	3.1MM*155	N-70
41b	411031-10	O'ring	1	3.1MM*168	N-70
41c	411031-02	O'ring	1	3.1MM*190	N-70
43	431225-1	Mech.seal	1	Single EA560 M25	CM/CB/NBR
43a	431225	Mech.seal	1	Single EA560 M25	SIC/SIC/NBR
45	459010	Gasket	2		N-70
64	64901158	Insulating sheet	1		
66	66715105-1	Cable gland	1	10.5MM	NBR
68	68432	Gland Holder	1		SUS-304
71	7128-04	Thermal protector	1	KA313 GCWN103	
73	73432060161	Screw	4	Socket hex. M6*16	SUS-304
73a	73432100161	Screw	2	Socket hex. M10*16	SUS-304
73b	73431100251	Screw	14	Flat hex. M10*25	SUS-304
73c	73433040121	Screw	2	Cross M4*12	SUS-304
73d	73431080251	Screw	8	Flat hex. M8*25	SUS-304
73e	73431060201	Screw	4	Flat hex. M6*20	SUS-304
74	7434312	Nut	1	M12	SUS-304
75	753430006-01	Spring washer	8	M6	SUS-304
75a	753430010-01	Spring washer	10	M10	SUS-304
75b	751306304	Wave washer	2	6304	SC
75c	753430008-01	Spring washer	4	M8	SUS-304
75d	756300008-01	Washer	4	M8	SC
75e	753430012-01	Spring washer	1	M12	SUS-304
75f	752430014-01	Washer	1	M12*27*3T	SUS-304
76a	7601-02	C'ring	1	RTW-72	
76b	7602-02	C'ring	1	STW-25	
77	771432-02	Key	1	5*5*38	SUS-304
79	79363041	Bearing	1	6304	
79a	79363061	Bearing	1	6306	
81	8108154200132-1	Cable	1	H07RN-F 1.5*4C*20M	
Remarks					
		O'ring & Gasket sets	1		