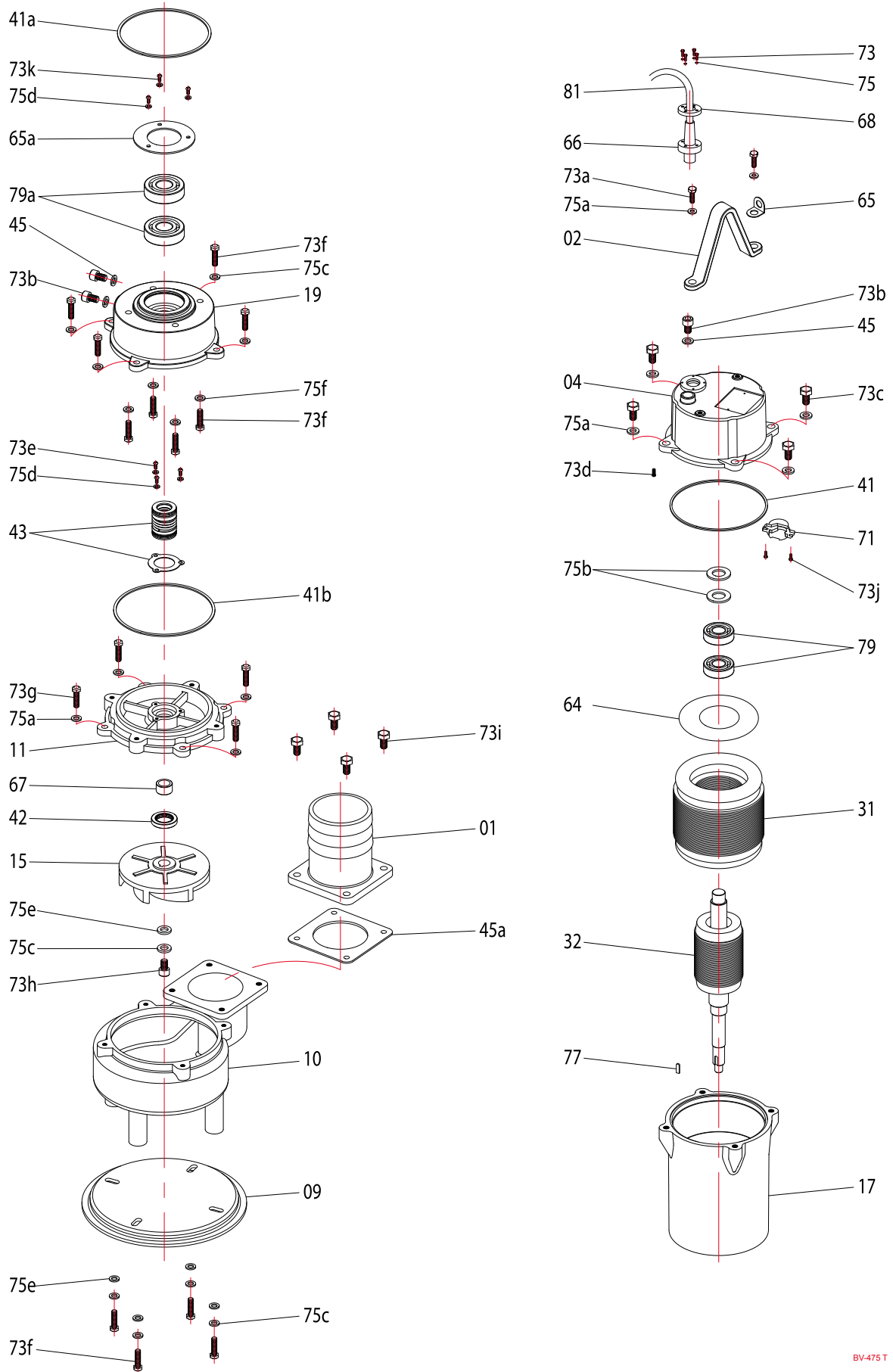


Type	A	B	C	D
BV 475 T	740	635	171	390



Index	Code NO	Description	Q'ty	Size	Material
01		Discharge head	1	4 "	FC-20
02		Handle	1		FCD-45
04		Upper cover	1		FC-20
09		Base plate	1		FC-20
10		Pump casing	1		FCD-45
11		Seal bracket	1		FC-20
15		Impeller	1		FC-20
17		Motor frame	1		FC-20
19		Bearing bracket	1		FC-20
31		Stator	1	160*82*180L	
32		Shaft/Rotor without Bearing	1		
41		O'ring	1	3.1MM*160	N-70
41a		O'ring	1	3.1MM*150	N-70
41b		O'ring	1	3.1MM*168	N-70
42		Oil seal	1	25*40*8	
43		Mech.seal	1	SIC/SIC/NBR VS CM/CB/	
45		Gasket	3		N-70
45a		Gasket	1		N-70
64		Insulating sheet	1		
65		Shim	1		SUS-304
65a		Shim	1		SUS-304
66		Cable gland	1		NBR
67		Shaft sleeve	1	20*25*20T	
68		Gland Holder	1		SUS-304
71		Thermal protector	1		
73		Screw	4	Socket hex. M6*15	SUS-304
73a		Screw	2	Flat hex. M10*25	SUS-304
73b		Screw	3	Socket hex. M10*16	SUS-304
73c		Screw	4	Flat hex. M10*40	SUS-304
73d		Screw	1	Round Cross M4*12	SUS-304
73e		Screw	3	Flat hex. M5*12	SUS-304
73f		Screw	12	Flat hex. M8*25	SUS-304
73g		Screw	4	Flat hex. M8*30	SUS-304
73h		Screw	1	Socket hex. M8*25	SUS-304
73i		Screw	4	Flat hex. M10*30	SUS-304
73j		Screw	2	Cross M4*12	SUS-304
73k		Screw	3	Flat hex. M6*10	SUS-304
75		Spring washer	4	M6	SUS-304
75a		Spring washer	6	M10	SUS-304
75b		Wave washer	2	6304	SC
75c		Spring washer	13	M8	SUS-304
75d		Spring washer	6	M5	SUS-304
75e		Washer	5	M8	SUS-304
75f		Washer	4	M8	SC
77		Key	1	4.8*5*15	SUS-304
79		Bearing	2	6304ZZ	
79a		Bearing	2	6306ZZ	
81		Cable	1		
Remarks					
		O'ring & Gasket sets	1		