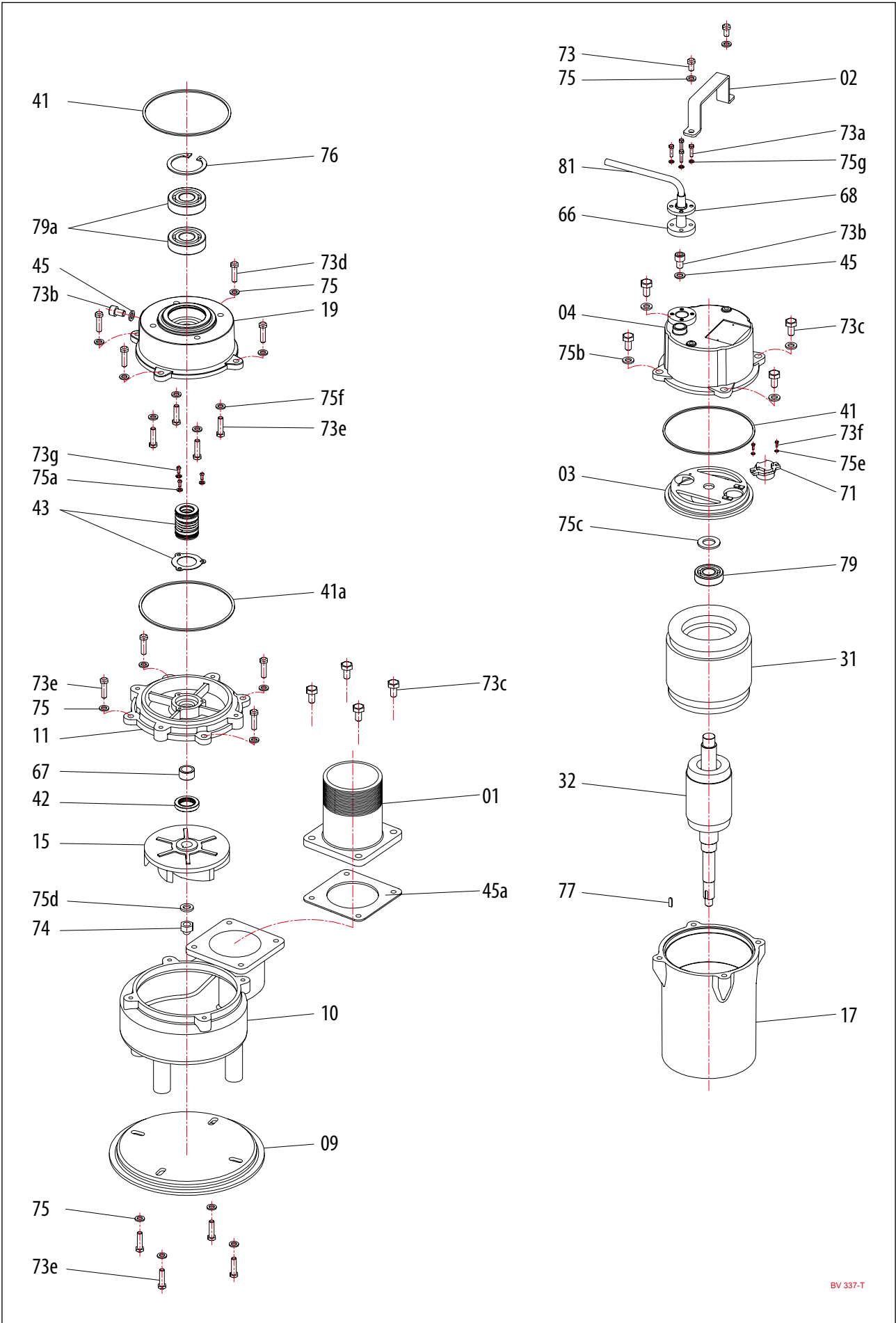


Type	A	B	C
BV 337 T	640	259	368



Index	Code NO	Description	Q'ty	Size	Material
01	01360741-2	Discharge head	1	3"	FC-20
02	02435	Handle	1		SUS-304
03	0336FBV0225	Switch plate	1		FC-20
04	0436BV0225L	Upper cover	1		FC-20
09	0935BV0375	Base plate	1		FCD-45
10	1036BV0375	Pump casing	1		FC-20
11	0036BV0375	Seal bracket	1		FC-20
15	1536BV-0375153	Impeller	1	132*20	FC-20
17	1736140230	Motor frame	1	140*230MM	FC-20
19	1936BV0375	Bearing bracket	1		FC-20
31	313440311F6	Stator	1	140*75*110L	
32	323BV0375	Shaft/Rotor (without Bearing)	1		
41	411031-06	O'ring	2	3.1MM*144.4	N-70
41a	411026-12	O'ring	1	2.62MM*133	N-70
42	4214325-01	Oil seal	1	25MM-40*8	SUS-304
43	432220-01	Mech. seal	1	Double M20 SIC/SIC VS CE/CA	
45	459010	Gasket	2		N-70
45a	455FS-055010	Gasket	1		N-70
66	66715105-1	Cable gland	1		
67	674325-02	Shaft sleeve	1	25mm*20*2T	SUS-304
68	68432	Gland holder	1		SUS-304
71	7128-04	Thermal protector	1	KA313 GCWN103	
73	73431080151	Screw	2	Flat hex. M8*15	SUS-304
73a	73431050201	Screw	4	Socket hex. M6*16	SUS-304
73b	73432100201	Screw	2	Socket hex. M10*20	SUS-304
73c	73431100251	Screw	8	Flat hex. M10*25	SUS-304
73d	73431080301	Screw	4	Flat hex. M8*30	SUS-304
73e	73431080251	Screw	12	Flat hex. M8*25	SUS-304
73f	73303040081	Screw	2	Round cross M4*8	SC
73g	73303050121	Screw	3	Flat hex. M5*12	SC
74	7424312	Nut	1	M12	SUS-304
75	753430008-01	Spring washer	14	M8	SUS-304
75a	753430005-01	Spring washer	3	M5	SUS-304
75b	75430010-01	Spring washer	4	M10	SUS-304
75c	751306304	Wave washer	2	6304	SC
75d	753430012-01	Spring washer	1	M12	SUS-304
75e	752300004-01	Washer	2	M4*11*1.05T	SC
75f	756300008-01	Washer	4	M8	SC
75g	753430006-01	Spring washer	4	M6	SUS-304
76	7601-01	C'ring	1		
77	771432-01	Key	1	5*5*15	SUS-304
79	79362041	Bearing	1	6204	
79a	79363051	Bearing	2	6305	
81	8108154200132-1	Cable	1	H07RN-F 1.5*4C*20M	
Remarks					
		O'ring & Gasket sets	1		